

194.95 FARMGROUND FOR LEASE

VISTA SANTA ROSA, CA



SEC AVE 60 & JACKSON ST, VISTA SANTA ROSA, CA

FEATURES

- Canal water available
- Tiled
- In the Process of Organic Certification

LEASE RATE: \$600/AC

COACHELLA VALLEY



VICINITY MAP



SUSAN HARVEY

DRE #00957590
susan@dppllc.com
Cell: 760.250.8992

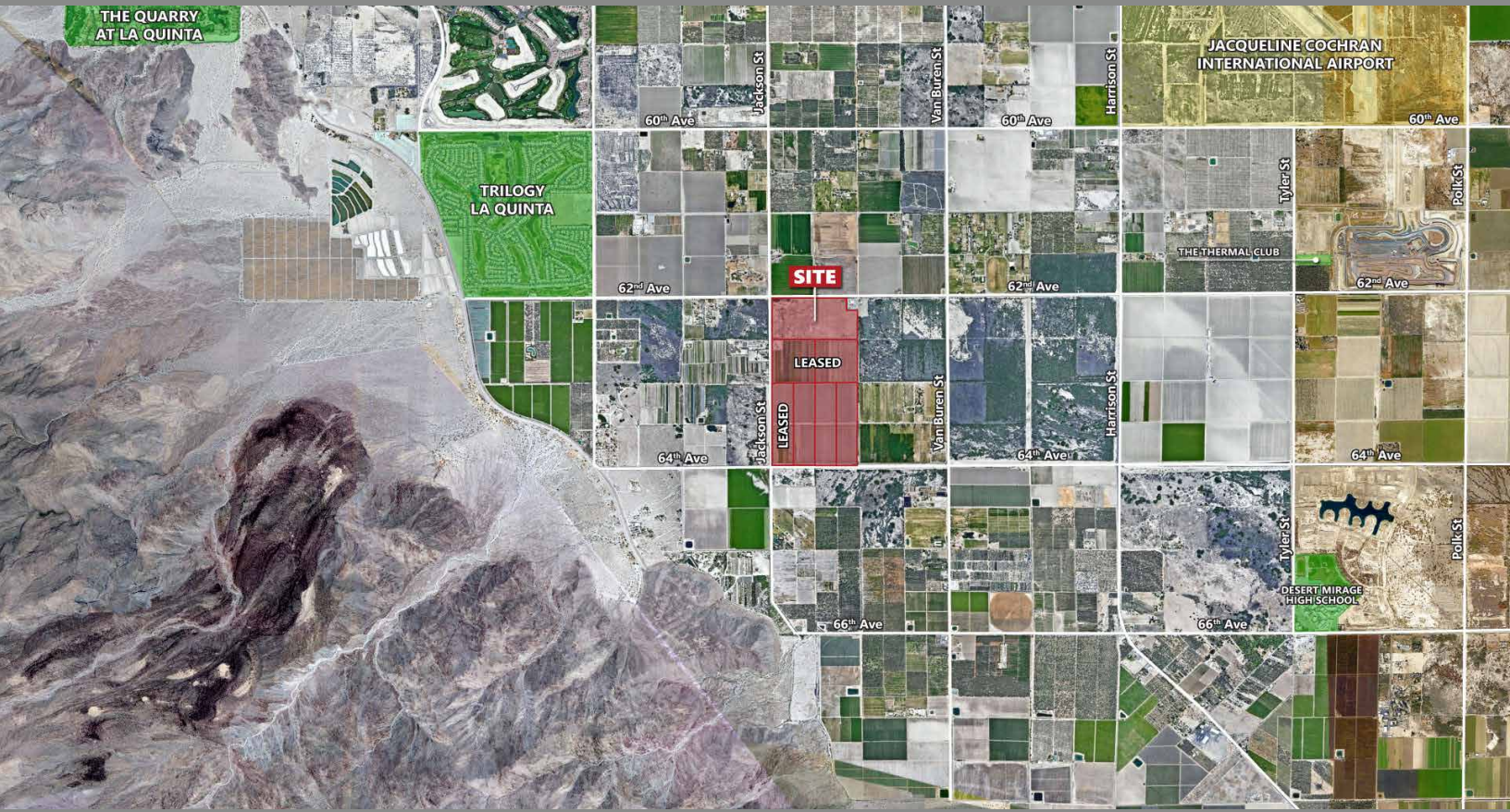


PAULA TURNER

DRE #00702492
paula@dppllc.com
Direct: 760.766.0511
Cell: 760.578.6564

194.95 FARMGROUND FOR LEASE

AERIAL & SITE AMENITIES



SITE AMENITIES

- **Location:** SEC Jackson St./Avenue 62 in the Vista Santa Rosa area
- **Zoning:** A-2-10 (Heavy Ag, north 74.45 acres); A-1-10 (Light Agriculture, 10 acre minimum lot size)
- **General Plan:** AG (Agriculture)
- **Current Use:** Vacant farm ground, storage/shop building
- **Total Parcel Sizes:** 314.29 acres
- **APN:** 753-110-035 (74.45 AC), 004 (40.5 AC), 005 (40.5 AC), 027 (38.34 AC), 028 (40.17 AC), 029 (40.16 AC), 030 (40.17 AC)
- **Irrigation Water:** Yes, CVWD Meter #3421, 1356, 1588, 1561
- **Tiled:** Yes, Tile Map #201, 267, 470, 549
- **Ag Preserve:** Yes
- **Adjacent Uses:** Farmground and Ranch Homes
- **Soil Types:**
 - It - Indio very fine sandy loam, wet
 - Sb - Salton silty clay loam
- **Topo:** Flat
- **Comments:** Previously farmed to Okra

SOILS MAP



760.360.8200 | DesertPacificProperties.com | 77-933 Las Montanas Rd. Suite 101 Palm Desert CA 92211

Disclaimer: The information provided has been obtained from sources believed reliable. While we do not doubt its accuracy, we have not verified it and make no guarantee, warrant or representation about it. Buyer is strongly encouraged to independently confirm its accuracy and completeness. Any projections, opinions assumptions or estimates used are for example only, and may not accurately represent the current or future performance of the property.